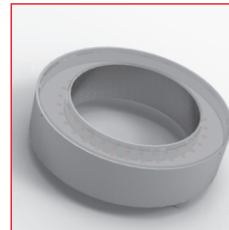


# Professional lighting systems for industrial imaging

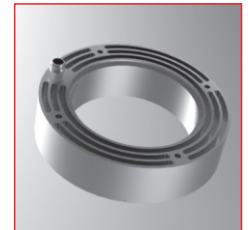
## RONDO-LX & RONDO-LX-RGB

### Ring light

- >> great variety
- >> high homogeneity
- >> thermally optimized, robust aluminium housing
- >> also available as RGB version
- >> optional 4 segment control (not for RGB version)
- >> large opening for lens
- >> easy mounting directly on the lens
- >> for continuous, switched and pulsed operation (depending on type)



RONDO-LX front view



RONDO-LX rear side with integrated cooling ribs

### Technical specifications



Housing	Aluminium, natural anodised
Filterthread-connection	M72 x 0,75
Front cover (within the scope of supply)*	Acrylic clear, antireflective coating 3mm
Total weight	approx. 160g
Operating / ambient temperature	max. 50°C recommended
IP protection class	depending on the version
Connector	M8plug (4-pin)** / <b>RGB version / 4-Channel-Operation:</b> M8 plug (6-pin)**
Supply voltage***	<b>24VDC type or 12VDC type:</b> 24VDC resp. 12VDC (RGB version not available as 12VDC type) <b>SC type:</b> For use in conjunction with a controller
Number of LEDs	32 (monochrome versions) / 30 (RGB version)
LED lifetime	The LED lifetime of our lights is very high, but depends on many different factors such as ambient temperature, current load, and so on. Further information is available in the <b>Technical information LED lifetime.</b>

\* more information and further front covers see section Accessories

\*\* Cable not included in the scope of supply

\*\*\* more information see section Operating modes

### Characteristics

Colour *	LED characteristics		typical characteristics per light		
	Wavelength (approx.)	Viewing angle	Current demand (24V type) ** / constant current max. (SC type) [mA]	Pulse current max. (SC type) *** [mA]	Intensity **** [W/m <sup>2</sup> ]
red	617nm	30°		400	
red	617nm	60°		400	
red	635nm	120°		400	
white	6500K	120°	165	400	
SH white	6500K	120°		2400	
IR	850nm	30°		1600	
IR	850nm	50°		1600	
IR	850nm	120°		1600	
blue	470nm	20°		640	
UV	375nm	120°			
RGB	red	630nm	per colour max. total	per colour	
	green	530nm			
	blue	470nm			

\* other colours and types from UV to infrared on request

\*\* stated current values of the 24V types should be considered approximate values

\*\*\* depending on the strobe conditions, recommended maximum values for a flash time of 1ms

\*\*\*\* approximately data measured in DC mode; Measuring distance 150mm



#### Safety note!

LED light systems can produce very intense radiation, which may possibly damage the eyes on improper use. Do not look directly into the light beam with unprotected eyes! Use eye protection!

technical changes reserved

#### Büchner Lichtsysteme GmbH

Uzstrasse 2  
86465 Welden  
Germany

Tel.: +49 (0)8293 | 909 112  
Fax: +49 (0)8293 | 909 111

E-mail: info@buechner-lichtsysteme.de  
Web: www.buechner-lichtsysteme.de

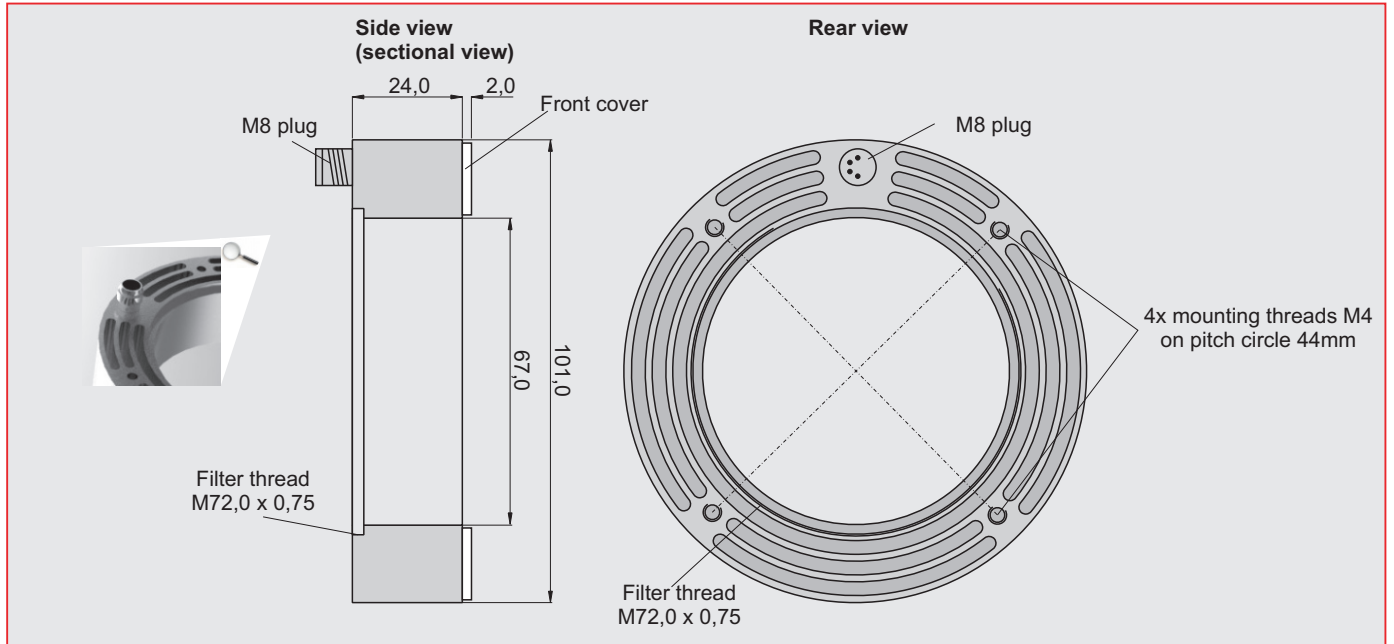
www.imaging-light-technology.com

●●● IMAGING ● LIGHT ● TECHNOLOGY  
**BÜCHNER**

# RONDO-LX & RONDO-LX-RGB

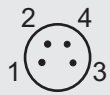
## Ring light

### Dimensions



### PIN assignment connector

M8 plug 4-pin  
(Front view on housing)



**24VDC type**

PIN	Colour	Function
1	brown	+ 24V
3	blue	-

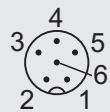
**12VDC type**

PIN	Colour	Function
2	white	+ 12V
3	blue	-

**SC type**

PIN	Colour	Function
4	black	+
3	blue	-

M8 plug 6-pin  
(Front view on housing)



**RGB version**

**24VDC type**

PIN	Colour	Function
1	brown	+ 24V
6	rose	- Ch. R
5	grey	- Ch. G
3	blue	- Ch. B

**SC type**

PIN	Colour	Function
4	black	+ common
6	rose	- Ch. R
5	grey	- Ch. G
3	blue	- Ch. B

**Special version 4-Channel-Operation**

**24VDC type**

PIN	Colour	Function
1	brown	+ 24V
3	blue	- Sector 1
4	black	- Sector 2
5	grey	- Sector 3
6	rose	- Sector 4

**12VDC type**

PIN	Colour	Function
2	white	+ 12V
3	blue	- Sector 1
4	black	- Sector 2
5	grey	- Sector 3
6	rose	- Sector 4

**SC type**

PIN	Colour	Function
4	black	+ common
3	blue	- Sector 1
2	white	- Sector 2
5	grey	- Sector 3
6	rose	- Sector 4

### Operating modes

#### 24VDC type / 12VDC type

The lights are designed depending on the version for continuous operation at 24VDC or 12VDC. The following operating modes are possible:

- DC operation at an appropriate power supply with 24VDC or 12VDC
- Switched operation with a matching power supply e.g. via PLC, opto-relay or controller (GS or SC series)
- Brightness-controlled operation via controller (GS or SC series) in conjunction with suitable power supply
- Pulsed mode via controller (GS or SC series) in conjunction with suitable power supply. The LED current can be increased in pulse mode up to a factor of 2 to 3.

#### SC type

For pulsed, switched or brightness-controlled operation, the lights are also available as optimized SC versions. They can be used in combination with our controllers of the GS and SC series and provide optimized and maximum current flow, especially in pulsed operation. We will assist you in selecting the right components.

### Technical notes (RGB version)

#### Operation of the RGB version directly at 24V

By switching on and off the ground lines of the 3 single colors (RGB), the individual colors can be activated and mixed.

#### Continuous/pulsed operation of the RGB version with SC4, SC6 or GS 420

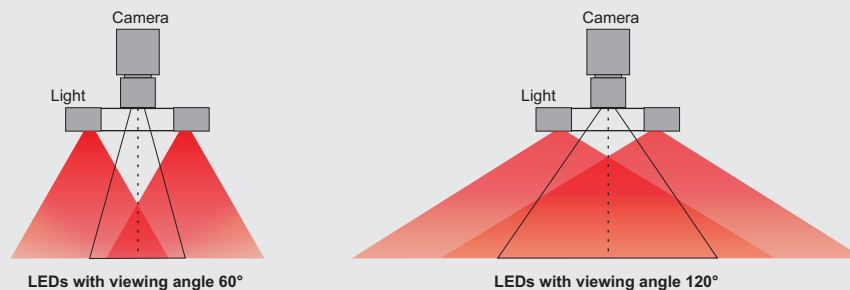
When using 3-channel operation with the listed controllers, any colour mixture can be realised by setting a particular current to the 3 channels (RGB), both in continuous and pulsed operation.

### Options / special versions

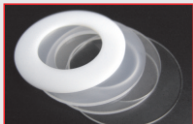
#### 4-Channel-Operation

The monochrome versions of the RONDO-LX can optionally be configured, so the LED ring is separated in 4 independently controllable sectors. For this 4-Channel-Operation a 6-pin M8 plug is used as connector by default. For the corresponding pin assignments, you can refer to the section PIN assignment connector.

### Application notes



### Accessories



#### Front covers / diffusers

Through the use of different diffuse front covers, the optical characteristics of the illumination can be changed. More information can be found in the **Technical information Front materials**.



#### Adapter rings

for the coupling of the connection thread M72x0,75 of the RONDO-LX to other threads.

Order numbers on request.